

# Infrastructure Facilities



## Suman Ramesh Tulsiani Technical Campus

### Faculty of Engineering

Mauje: Khamshet, Pune-Mumbai Highway (NH4), Tal: Maval, Dist: Pune-410405

Approved: By AICTE, New Delhi, Recognized by Govt. of Maharashtra. Affiliated to University of Pune & MSBTE

### Infrastructure Common Facilities

Sr No.	Particulars	Available
1	Class Room	14
2	Tutorial Rooms	04
3	Laboratory	30
4	Workshop	01
5	Additional Workshop	04
6	Drawing Hall	01
7	Seminar Hall	02
8	Computer Center	01
9	Boys Common Room	01
10	Girls Common Room	01
11	Exam Control Room	01
12	Training & Placement Office	01
13	Library & Reading Room	01
14	Language Laboratory	01



## ICT Enabled Seminar Hall



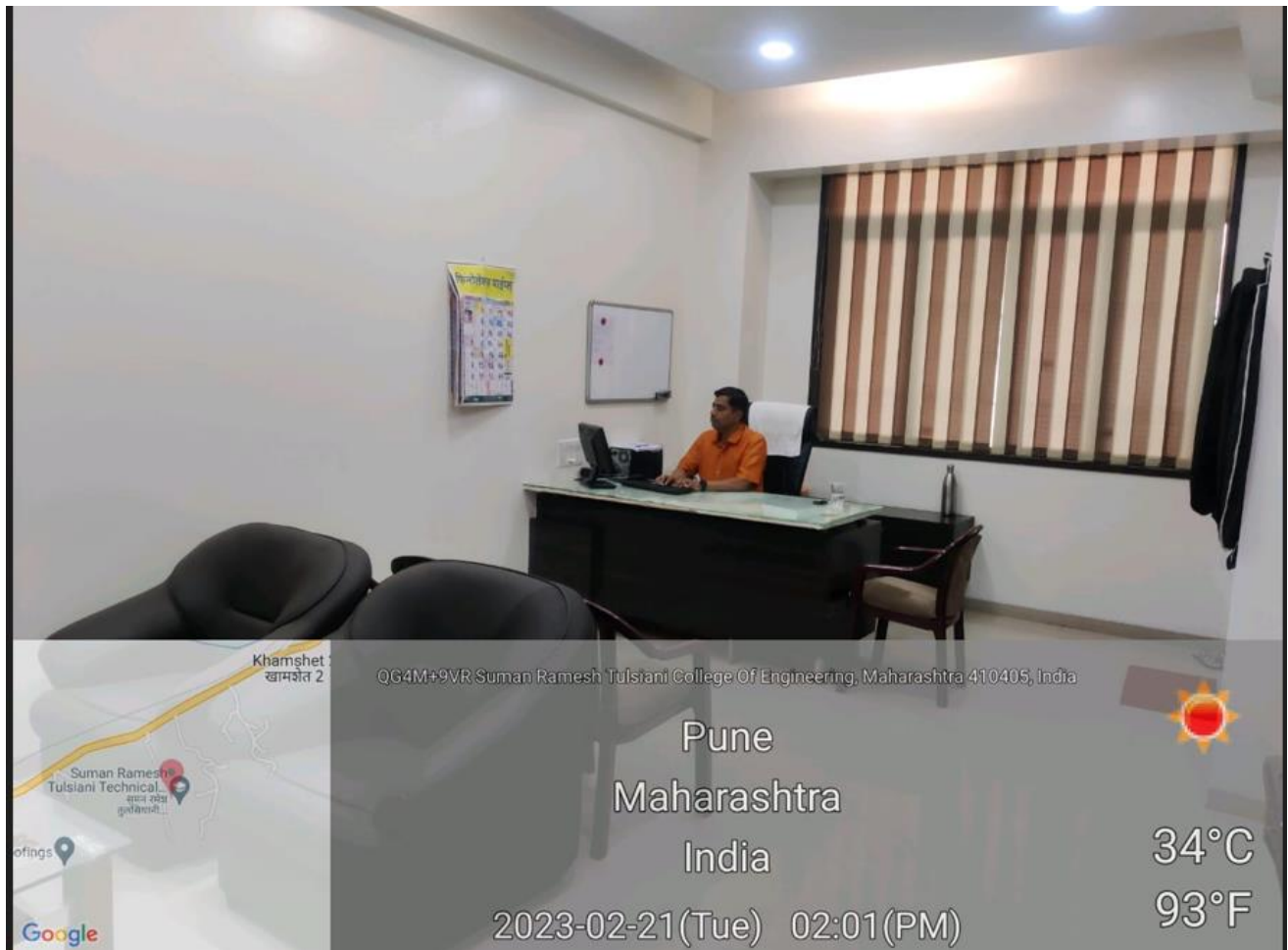
## Laboratory with all the Facilities



## Open House Amphitheatre



## Admin Office

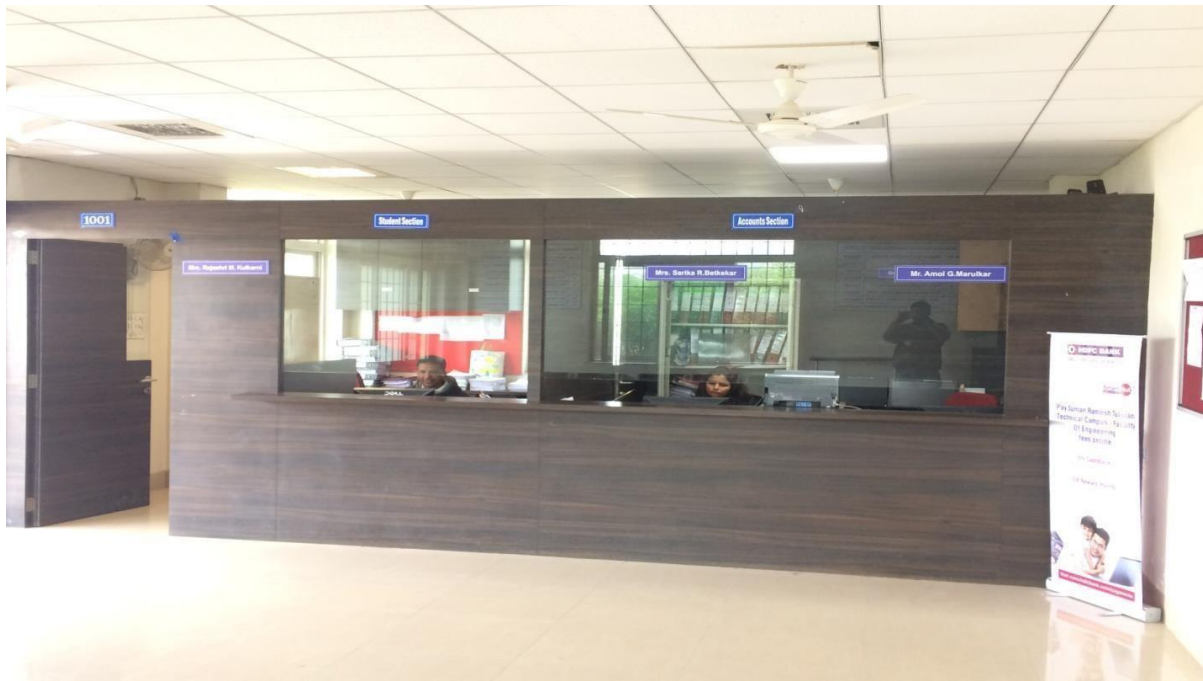




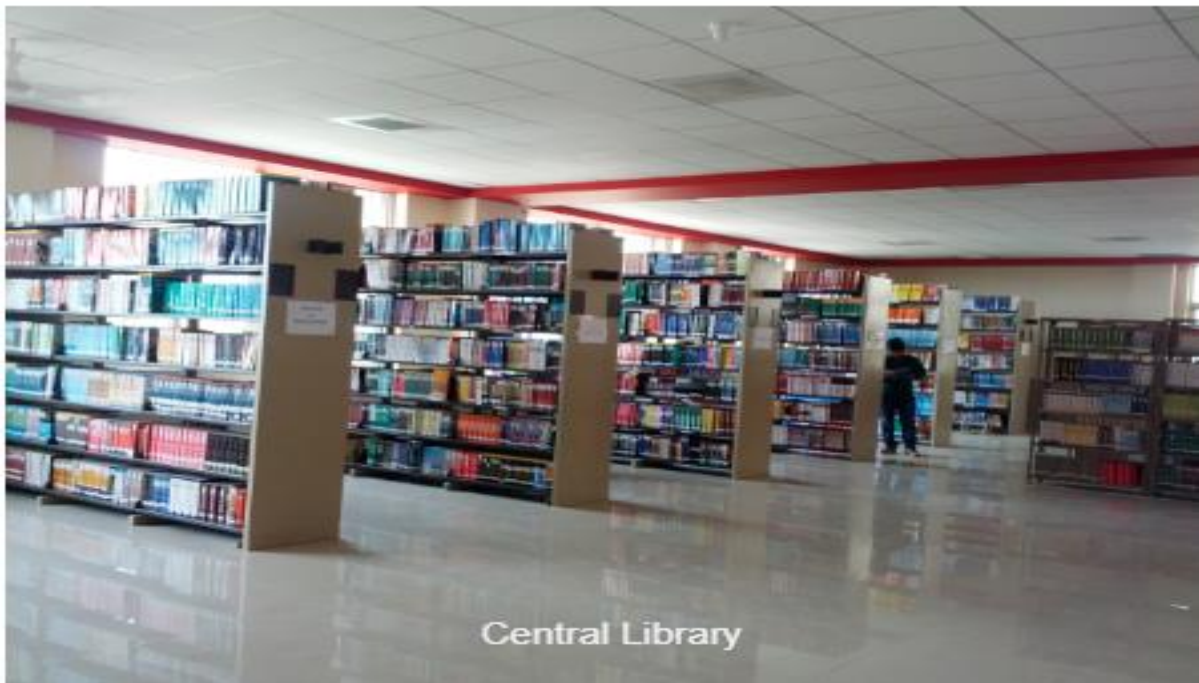
Q64M+9VR Suman Ramesh Tulsiani College Of Engineering, Maharashtra 410405, India  
Pune  
Maharashtra  
India  
2023-02-21 (Tue) 02:08 (PM)  
34°C  
93°F



Q64M+9VR Suman Ramesh Tulsiani College Of Engineering, Maharashtra 410405, India  
Pune  
Maharashtra  
India  
2023-02-21 (Tue) 02:01 (PM)  
34°C  
93°F



**LIBRARY**





Central Library

# Sports & Cultural Facility



Suman Ramesh Tulsiani Charitable Trust's

# SUMAN RAMESH TULSIANI TECHNICAL CAMPUS - FACULTY OF ENGINEERING

Approved by All India Council for Technical Education, Recognized by Govt. of Maharashtra  
Affiliated to Savitribai Phule Pune University and Maharashtra State Board of Technical Education  
DTE Code : EN6767, SPPU Code : CEGP019380, MSBTE Code : 1729

Respected Sir,

Mentioned below Sports facilities are available for students from  
Department of Physical Education & Sports of SRTTC, Khamshet.

Sr. No.	Name
1	Volleyball Court
2	Cricket Ground
3	Kabaddi Ground
4	Badminton Court
5	Table Tennis Facility
6	Carom Facility

Additional Pictures have paste for the References.



Thanks & Regards,

*P. Bhokare*  
Mr. Ritesh Bhokare,  
Physical Director,  
SRTTC, Khamshet

*Jaywant B. Sankpal*  
Dr. (Prof) Jaywant B.Sankpal  
Principal,  
SRTTC, Khamshet

# Sport & Cultural Facilities



**Suman Ramesh Tulsiani Technical Campus Faculty of Engineering,**

**Khamshet, Tal: Maval, Dist: Pune.**



## Weightlifting



## Kabbaddi Ground



## Volleyball Court



## Cricket Ground



## Yoga Center



## Cultural Activities





## ICT Enabled Classroom and Seminar Hall



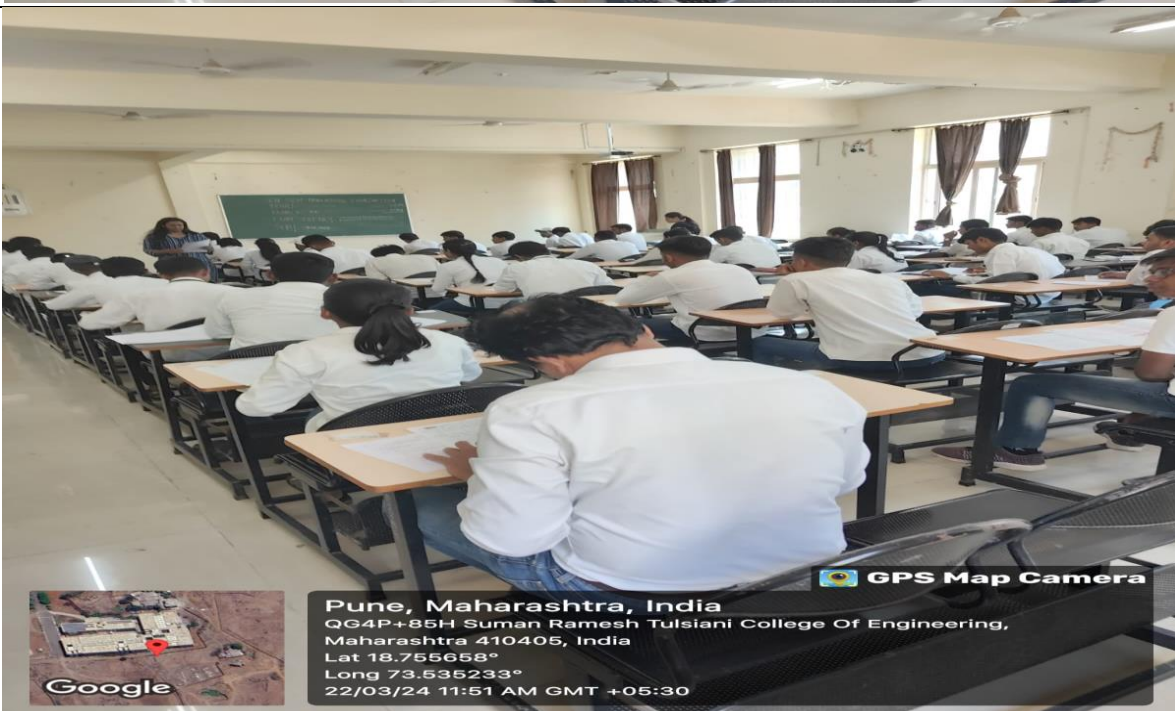
## Suman Ramesh Tulsiani Technical Campus

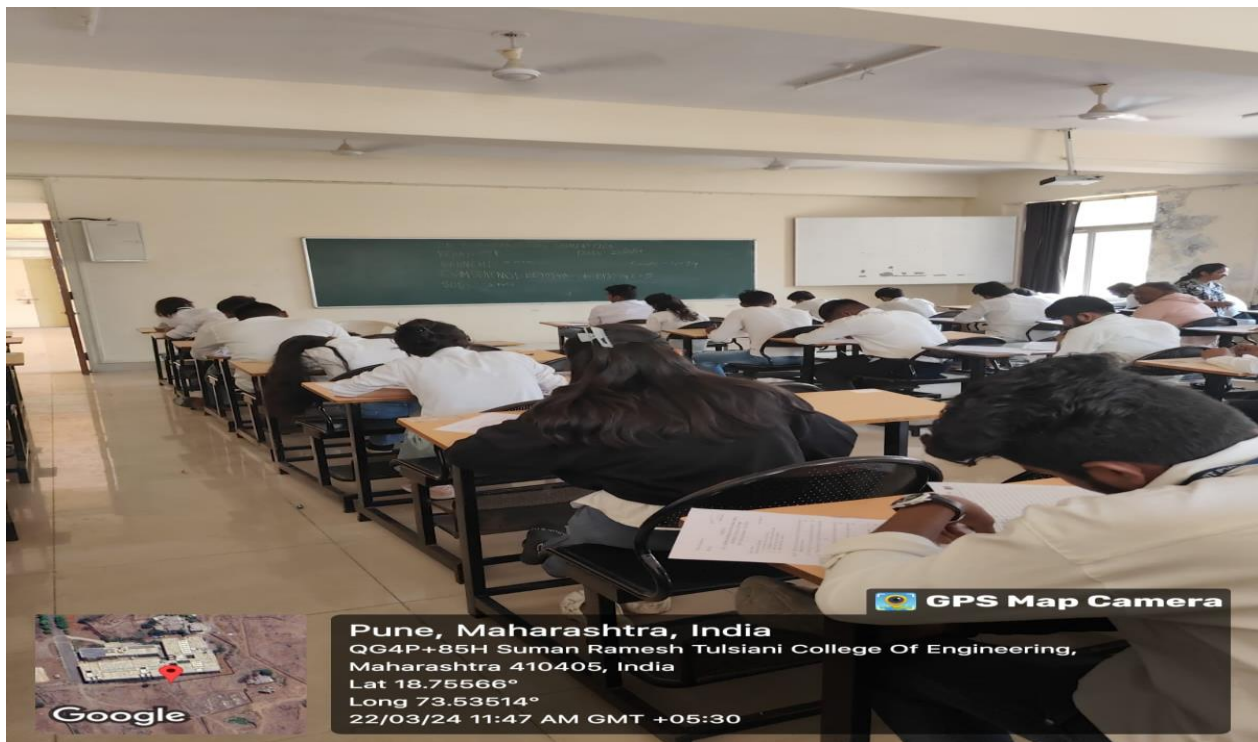
### Faculty of Engineering

Mauje: Khamshet, Pune-Mumbai Highway (NH4), Tal: Maval, Dist: Pune-410405

Approved By A.I.C.T.E. New Delhi, Recognized by Govt. of Maharashtra, Affiliated to University of Pune & MSBTE

### ICT Enabled Smart Classroom







 **GPS Map Camera**



**Pune, Maharashtra, India**  
QG4P+85H Suman Ramesh Tulsiani College Of Engineering,  
Maharashtra 410405, India  
Lat 18.755821°  
Long 73.535331°  
22/03/24 11:47 AM GMT +05:30



 **GPS Map Camera**



**Pune, Maharashtra, India**  
QG4P+85H Suman Ramesh Tulsiani College Of Engineering,  
Maharashtra 410405, India  
Lat 18.755904°  
Long 73.535475°  
22/03/24 11:46 AM GMT +05:30



 **GPS Map Camera**



Google

**Pune, Maharashtra, India**  
QG4P+85H Suman Ramesh Tulsiani College Of Engineering,  
Maharashtra 410405, India  
Lat 18.755879°  
Long 73.535457°  
22/03/24 11:45 AM GMT +05:30

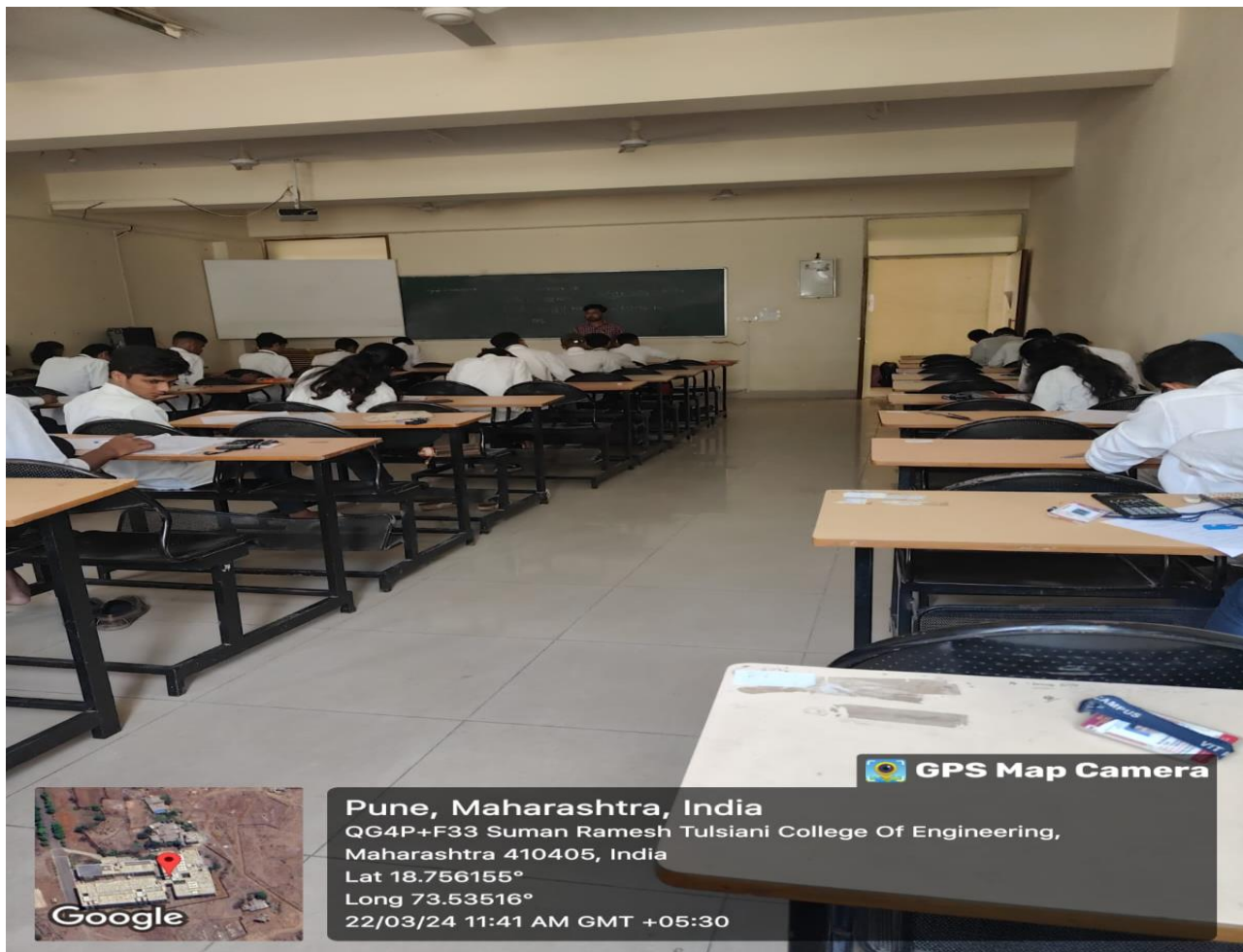


 **GPS Map Camera**



Google

**Pune, Maharashtra, India**  
QG4P+F33 Suman Ramesh Tulsiani College Of Engineering,  
Maharashtra 410405, India  
Lat 18.756204°  
Long 73.535247°  
22/03/24 11:44 AM GMT +05:30



 **GPS Map Camera**



**Pune, Maharashtra, India**  
QG4P+F33 Suman Ramesh Tulsiani College Of Engineering,  
Maharashtra 410405, India  
Lat 18.756155°  
Long 73.53516°  
22/03/24 11:41 AM GMT +05:30



 **GPS Map Camera**



**Pune, Maharashtra, India**  
QG4P+F33 Suman Ramesh Tulsiani College Of Engineering,  
Maharashtra 410405, India  
Lat 18.756252°  
Long 73.53513°  
22/03/24 11:40 AM GMT +05:30



 **GPS Map Camera**



**Pune, Maharashtra, India**  
QG4M+9VR Suman Ramesh Tulsiani College Of Engineering,  
Maharashtra 410405, India  
Lat 18.756152°  
Long 73.53456°  
22/03/24 11:39 AM GMT +05:30







## ICT Enabled Seminar Hall





